



Reagent Specification Sheet

CATALOG #: R10141

REAGENT: Anti- [Human Ig-Lambda Light Chain] Monoclonal Antibody

CLONE: 10141

ISOTYPE: Murine IgG1κ

FORM: Ready-to-Use

PACKAGE SIZE: 5 ml

STORAGE: Store refrigerated (2-8 °C) during use or aliquot and freeze (-20 °C) for long term storage.

Applications:

1. **Immunohistochemistry.** This monoclonal antibody can be used for labeling formalin-fixed paraffin-embedded (FFPE) tissue sections. The antibody is supplied as ready-to-use antibody diluted to match a reference standard. Recommended antigen retrieval method is steam/EDTA, pH 8.0; other AR methods may also be appropriate. Proteinase treatment is not recommended. Secondary antibody must recognize mouse IgG1 immunoglobulins. Each laboratory should validate the use of this product for each system being used.

Reference:

Weiss LM, Loera SHT, Bacchi CE. Immunoglobulin Light Chain Immunohistochemistry Revisited, With Emphasis on Reactive Follicular Hyperplasia Versus Follicular Lymphoma. . *Applied Immunohistochemistry & Molecular Morphology*, (2010) 18:199-205

2. **Other Applications.** The use of this antibody in other applications has not been verified, however, the antibody may be appropriate for other uses.

Warnings and Precautions:

1. For professional users – observe proper handling procedures.
2. Each laboratory should validate the use of this product in the systems being used.

Warning: This product contains sodium azide, which has been classified as Xn (harmful). When disposing of this reagent, flush with copious volumes of water to prevent azide build-up in drains.

ALL REAGENTS ARE FOR RESEARCH USE ONLY

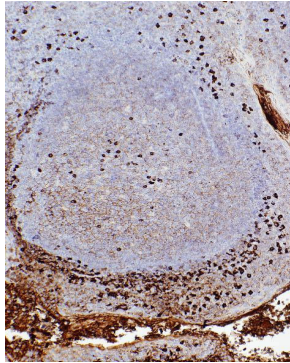
Customer Service: (US) 888-438-1942 / (+01) 626 359 8441
www.silverlakeresearch.com

Reagent Specification Sheet

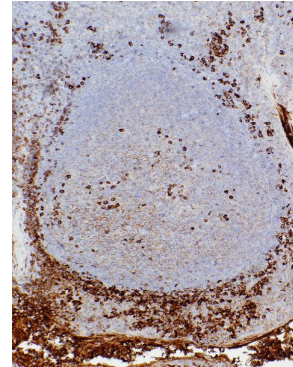
Examples of IHC Results with Antibodies R10141 (anti-lambda) and R10135 (anti-kappa) using an automated IHC system. Images courtesy of Dr. L. Weiss, City of Hope, Duarte, CA, USA (used with permission).

1. Normal Tonsil

R10141

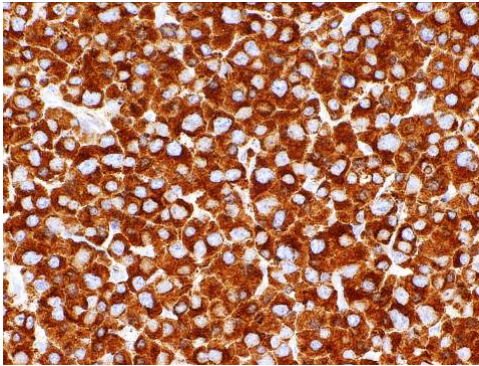


R10135

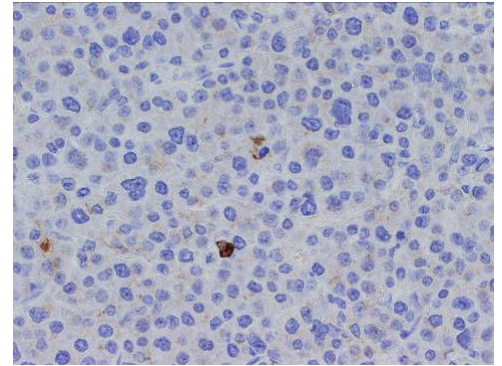


2. Myeloma

R10141

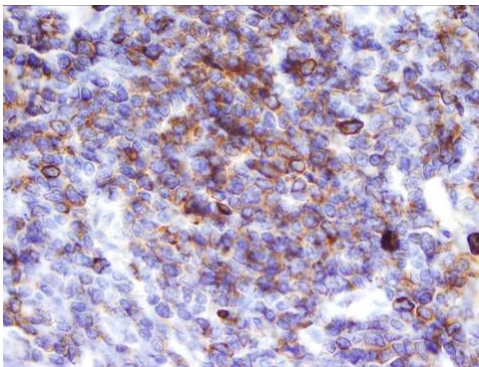


R10135



3. Mantle Cell Lymphoma

R10141



R10135

